

infra BIM OPEN

LYON 2022

10 - 12 JAN 2022



At the instigation of buildingSMART France, INDURA for the Innov'Infra Hub and the national MINnD project led by Irex, France is hosting this international technical conference - for the first time - highlighting the economic sector of Infrastructure.

We have been preparing for this international event for over a year now, but it has been postponed several times due to covid. We are therefore pleased to be able to offer you this exceptional program for the French edition of InfraBIM Open 21-22.

- Out of the 126 papers received, 60 have been selected to present you a wide range of feedback and innovations around BIM, participating in the emergence of Connected Infrastructures.
- Moreover, the 22 sponsors-exhibitors present at this edition of IBO 21-22 will also demonstrate the advances of BIM Infra
- Finally, we wanted the opening and closing plenary sessions to focus on topics that will structure our businesses and the market More than 20 experts will participate to address the convergence of BIM and GIS, digital technology for low carbon, the results of surveys and national deployments of BIM in a European digital strategy

A networking and conference broadcasting platform - Brella - has been set up for this edition. This will allow you to access all the presentations that will have taken place over these two days.

For Infrastructures, a key sector in France as well as internationally (for export), it is essential to be able to take advantage of all the potential of digital. Redesigning cities and transportation - with a view to smart cities - is a source of growth and jobs, just like the digital sector. A pragmatic approach must be adopted with a collective sharing of knowledge as it is acquired: this is the objective of InfraBIM Open Lyon. This international event is for us a «catalyst» of shared practices to create a sectoral dynamic, by encouraging exchanges and providing a 360 degree vision. Welcome to this edition of IBO !

InfraBIM Open organizers

Retrouvez-nous sur le stand :
Geomedia - Geomensura



SOLUTIONS LOGICIELLES, CLOUD ET MOBILES DANS LES DOMAINES
DE L'INFRASTRUCTURE, DES CHANTIERS ET DU PATRIMOINE.



Geomedia, Geomensura et Bloc in Bloc sont des filiales
de Sogelink-Geodesial Group.



Implementing BIM on your infrastructure projects to achieve greater performance,

As **setec** engineers, we work with you on developing an approach to get as close as possible to your project needs. A well-defined BIM strategy can generate many benefits : improving collaboration, enabling communication between stakeholders, achieving better quality control and risks management, optimising costs and deadlines, reducing the need of resources and environmental impacts, facilitating the assets operating and maintaining.

Discover **setec's** BIM Infrastructures methodology, that will help you developing values for each phase of your projects.



For more information, visit www.setec.fr



Sanitary protocol

We will control the «health pass» - day by day of the event at your first entry into the Palais de la Bourse - via a verification/reading operation, locally via the **TousAntiCovid application** (<https://play.google.com/store/apps/details?id=fr.gouv.android.stopcovid&hl=fr&gl=US>) and without storing any data. We will indicate on your badge - day by day - that you are allowed to attend the event. It is therefore imperative that you carry your badge with you at all times (especially if you leave the Palais during breaks).

The «Covid health pass» has been required for access venues that bring together more than 50 people. Any person over 18 years must present one of the three health proofs provided by the pass to access the following places and events (decree n° 2021-955 of 19 July 2021):

- Vaccination
- Proof of a negative test less than 24 hours old
- The result of a positive RT-PCR or antigenic test attesting to the recovery of the Covid-19, at least 11 days old and less than 6 months old

The exhibition area has wide aisles to avoid crowding and to promote safe distances. Food breaks and drink will be seated. According that catering must be seated and due to the venue capacity, there will be 2 services at lunchtime: so when you have finished your meal we ask you kindly to release the tables for the others attendees.

Outside the food breaks, everyone is asked to wear a mask. Microphone announcements - reminders of barrier gestures - will be made regularly, especially during breaks. The common areas will be cleaned several times a day and the rooms ventilated at the end of each session. Hydro-alcoholic gels will be available in several places in the Palais de la Bourse.

Avoiding the spread of covid concerns all of us, thank you for your help.

Nearest pharmacies to get tested:

- Pharmacie Lafayette Florit,
11 Rue Grenette, 69002 Lyon, 04 78 37 74 92
- Grande pharmacie lyonnaise
22 Rue de la République, 69002 Lyon, 04 72 56 44 00
- or app Doctolib
<https://www.doctolib.fr/depistage-covid-19-pcr-prelevement-naso-pharynge/lyon>
<https://www.doctolib.fr/depistage-covid-19-antigenique/lyon>



Xsite®
MACHINE CONTROL

TEC
Technology Engineering Consulting

**We turn bold ideas
into meaningful
projects**

Services:

- Development
- Design and engineering
- Construction management and supervision
- Operations

tec.lt



**UPGRADE
THE WAY
YOU OPERATE**

Streamline your operations and cut down infrastructure project costs with **openBIM workflow**.

**Visit our stand for
more information!**

NOVATRON
EARTHMOVING AUTOMATION

MOBA
MOBILE AUTOMATION

Novatron is a Founding partner of InfraBIM Open

xsitemachinecontrol.com

SMART CONSTRUCTION
Remote



**Remote support all latest
GNSS systems within one
web-based solution**

www.smartconstruction.io

Restaurants

BOUCHON LES LYONNAIS

19 rue de la Bombarde 69005 Lyon | +33 (0)4 78 37 64 82
www.restaurant-lyonnais.com | restaurantlyonnais@gmail.com

BOUILLON BARATTE

25 rue du Bât d'Argent 69001 Lyon | +33 (0)4 78 39 58 58
www.bouillonbaratte.com | arthur.buchard@diabolo-poivre.com

CAFÉ COMPTOIR ABEL

25, rue Guynemer 69002 Lyon | +33 (0)4 78 37 46 18
www.cafecomptoirabel.fr | cafecomptoirabel@orange.fr

CHABERT ET FILS

11, rue des Marronniers 69002 Lyon | +33 (0)4 78 37 01 94
www.chabertrestaurant.fr | chabert1@sfr.fr

DANIEL ET DENISE SAINT-JEAN

36, rue Tramassac 69005 Lyon | + 33 (0)4 78 42 24 62
www.danieletdenise.fr | stjean@danieletdenise.fr

HARD ROCK CAFE

1 rue du Président Carnot 69002 Lyon | + (0)4 78 84 22 42
<http://www.hardrock.com/cafes/lyon/> | info@hrclyon.com

LA MÈRE LÉA

11 quai des Célestins 69002 Lyon | +33 (0)4 78 42 01 33
<http://lamerelea.com/> | contact@lamerelea.com

LE GRAND REFECTOIRE

3 cour Saint-Henri 69002 Lyon | +33 (0)4 72 41 84 96
<http://www.legrandrefectoire.com/> | info@legrandrefectoire.com

L'INSTITUTION

24, rue de la République 69002 Lyon | +33 (0)4 78 42 52 91
<http://www.linstitution-restaurant.com/> | resa@institution-restaurant.com

Infrakit supercharges construction operations by offering fast visual access to information



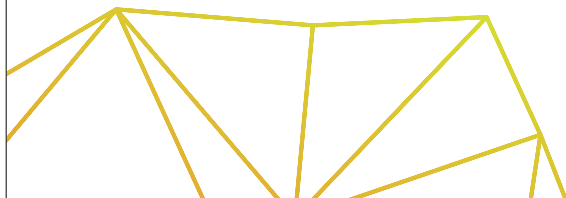
Enables easier execution and reporting of work



Information about project progress can be shared and received in real-time



Projects are completed faster, with better quality and reduced costs



Infrakit

Your digital transformation partner

ARKANCE
SYSTEMS

PLATINUM SPONSOR

 **InfraBIMOPEN**

EXCHANGE WITH OUR EXPERTS ON
DIGITALISATION OF INFRASTRUCTURE

Get into IBO's platform Brella so you won't miss anything!

As an attendee you have received an email to register to Brella, the networking and broadcasting platform of InfraBIM Open.

Please connect to Brella by desktop or mobile app.

With Brella, you can:

- fill your profile to get matchmaking networking
- schedule the conferences you want to attend
- benefit from the translations
- interact during the sessions and ask your questions to the speakers,
- network and set up meetings with attendees (on site or remotely) and partners regarding their profil
- attend exclusive exhibitor presentations and breakout moments,
- have access to VOD and post-event replays and ppt of the conferences you're interested in

After January 22, if you have not registered for Brella, you will not have access to the event replays and will not be part of the InfraBIM Open 21-22 digital community.

The Palais de la Bourse offers you a free wifi to follow the event on Brella (translations, comments): **IB022**

L'ingénierie numérique 4.0

A travers son expertise BIM&SIG le groupe Egis accompagne ses clients dans l'optimisation de la conception et l'accélération de la validation des projets, la réduction des coûts globaux et la création de villes et d'infrastructures plus intelligentes et résilientes.

IMAGINER. CONCEVOIR. CONCRÉTISER.
un futur durable





Éditeurs de solutions dans
les domaines de l'infrastructure,
des chantiers et du patrimoine.

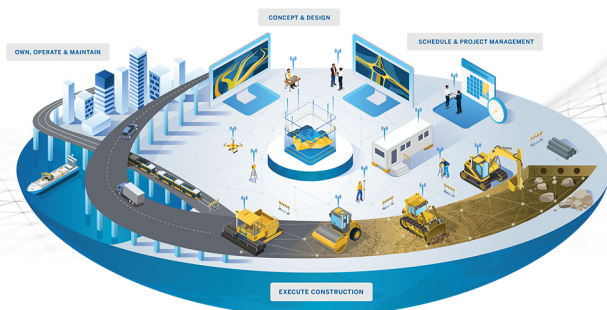
**Le BIM infrastructure,
c'est nous !**

Retrouvez nos solutions sur le stand :
Geomedia - Geomensura

Geomedia et Geomensura sont des filiales de Sogelink-Geodesial Group.

SITECH

**CONNECTING
CONSTRUCTION SITES**



Machine Control // Topography // Software



sitech-france.fr

For you
we enhance consulting and engineering services
thanks to **our digital solutions.**



SYSTRA

Meet us
on our booth
for a demo.



CONFIDENCE MOVES THE WORLD

Tuesday, 11 January

8:30 Welcome and Coffee

9:30 OPENING PLENARY focused on Low Carbon

Venue: Ampère

Broadcasted in English : Lumière / French : Tony Garnier

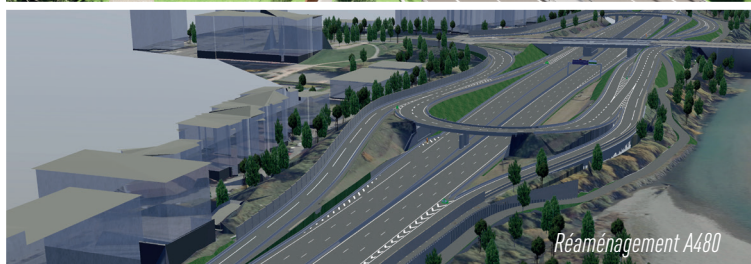
- **Inception** : Frank Hovorka (bSFrance), Pierre Rampa (Indura-Hub Innov'Infra), Bernard Schaer (PN MINnD), Tarmo Savolainen (bSFinlande)
- **openBIM and openGIS** : Richard Petrie (buildingSMART International), Scott Simmons, (Open Geospatial Consortium - OGC)
- **Keynotes speakers** : Adelaide Feraille (ENPC) and Arvea Marieni (strategy advisor and innovation manager specialising in environmental cooperation between the EU and China)
- **Round table «How digital is a key for Low carbon's strategy in the building sector»** : Anne de Bartoli (FNTP), Blaise Sola (Syntec Ingenierie), Chantal Alario (Engie), Ville Alajoki (project manager of Kruunusillat, Helsinki)
- **Conclusion** by Beatrice Vessiller, Grand Lyon, pioneer of major infrastructure projects



**ENGAGÉ POUR
VOTRE PROJET**

**RENCONTRONS-NOUS !
RENDEZ-VOUS SUR
NOTRE STAND N°14.**

WWW.INGEROP.FR





Frank Hovorka,
buildingSMART
France's chair



Pierre Rampa,
Hub Innov'Infra's
chair and vice-
president of INDURA



Bernard Schaer,
national project
MINd's chair



Tarmo Savolainen,
buildingSMART Finland
representative



Richard Petrie,
buildingSMART
International



Scott Simmons,
Open Geospatial
Consortium



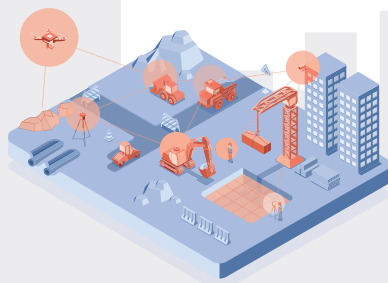
Adelaide Feraille
(ENPC)



Arvea Marieni, Keynote
speaker



**Connectez les données aériennes
à vos logiciels CAO et BIM**



**Online solution designed to meet all
stakeholders' needs**

Project Managers

Track, monitor and share your worksite

BIM Coordinators

Connect your data with the tools of your
worksite

Developers - Pointscene API


Automate data management and
integrate with existing workflows

13:30 - SALLE AMPÈRE: S1 ROAD STREETS	13:15 - SALLE TONY GARNIER: S2 RAILWAYS & URBAN TRAM
<p>Mrs. Tiina Perttula (Finland) - Ramboll Dr. Charles-Edouard Tolmer (France) - PN MINnD</p>	<p>Ms. Mercedes Santos (Switzerland) - SBB Mr. Guy Pagnier (Fr) - SYSTRA</p>
<p>Machine-readable specification of work for Norwegian road projects Mr. David Fürstenberg (Norway) - COWI</p>	<p>Collaboration within MINnD of the French Rail Sector for the international IFC Rail Project Mr. Vincent Keller (Fr) - PN MINnD / Egis</p>
<p>Platinum presentation by Novatron-Moba 30 years of digital transformation in InfraBIM road construction sites Mr. Miika Kostamo (Fi) - Novatron Oy / buildingSMART International Airport Room</p>	<p>Using IFC today prepares us for the future Ms. Dina Eggum (No) - Norconsult AS</p>
<p>Pioneering openBIM at the Finnish national road 4 - how to accomplish a 17 km / 140 MEUR motorway project entirely model-based Mr. Jarmo Niskanen (Fi) - FTI</p>	<p>Extension of Lyon metro line B to Hôpitaux Lyon Sud - BIM spatial coordination in construction phase Mr. Rémi BATISSON (Fr) - EGIS</p>
<p>How to collaborate and standardize data in multiple vendor environment on CDE platform - Strabag case study Mr. Arkadiusz Lesko (Poland) - Arkance Systems</p>	<p>Digitising to improve railway line management Mr. Jorge Torrico (Spain) - Ineco</p>

Découvrez comment
ArcGIS GeoBIM
transcende
vos projets BIM et SIG

www.esri.france.fr/bim

SIG et BIM, projet d'extension du tramway de Marseille
Données de l'extension du tramway T3 Nord de Marseille ©Egis



Côté	Non
GlobalId	29b20v0jgNEW0000005uH
LigneDeBaseHorizontale	155-196_G
LigneDeBaseVerticale	PL155-196_G
NomDeCode	Enrobage
NomLigneDeBase	Ligne de base - 154-196_G - (187)
NomProfilType	MP1.1 0cm
NomProjet3D	155-196_G
NomRégion	Zone - MP1.1 0cm - (172)
ProjectLongName	T3270_Multitubulaire_Projet3D
ProjectName	T3270_Multitubulaire_Projet3D
Volume	19,06047
PreDefinedType	

L'extension

🔍 ZOOM SUR

13:30 - SALLE LUMIÈRE: S3 OPENBIM USES CASES AND IMPLEMENTATION	13:15 - SALLE JACQUART: S4 URBAN
<i>Mr. Petteri Palviainen (Fi) - Novatron Oy</i>	<i>Mrs. Marion Schenkwein (Fi) - Finnish Transport Infrastructure Agency FTIA Dr. Didier Soto (Fr) - PN MINnD</i>
Ihku, Infrastructure Cost Management System Alliance Project <i>Mr. Ari Huomo (Fi) - FTIA</i>	Platinum presentation by egis Digital Twins for public infrastructures decision-makers: why open exchange schemes are a must-have? <i>Mr. Lionel Fabre (Fr) - EGIS,</i>
How ATB, a mid-size infrastructure owner, manages digitalization and thereby affects the market <i>Mr. Matthias Adelsbach (Ch) - Canton of Aargau, Infrastructure Department</i>	Urban Information Modeling (UIM) <i>Mr. Jarkko Sireeni (Fi) - xD Visuals Oy</i>
openBIM Implementation and use-cases for local public authorities: stakes and feedbacks <i>Mr. Rémi MONTORIO (Fr) - mel</i>	Use of openBIM in the process of creating the digital BIM model of the existing <i>Ms. Fatine Choujae (Morocco) - etafat</i>
The race to support a better information flow on infrastructure works is approaching the finishing line <i>Mrs. Karin Anderson (Sweden) - The Swedish Transport Administration</i>	Kalasatama-Pasila light rail - alliance collaboration in exceptional circumstances <i>Mr. Valtteri Brotherus (Fi) - WSP Finland</i>

15:15 Coffee, Exhibition and Networking



Une entreprise qui s'investit pour construire une Société durable.

Associé à des projets dans de nombreux pays, avec des filiales en Suisse, en France, en Algérie, Portugal et en Italie, le groupe BG, fondé en Suisse en 1954, est une société d'ingénieurs-conseils active dans les domaines des infrastructures, de l'environnement, du bâtiment et de l'énergie.

16:15 - SALLE AMPÈRE: S5 MAINTENANCE	16:00 - SALLE TONY GARNIER: S6 RAILWAYS & URBAN TRAM
Mr. Sylvain Guilloteau (Fr) - PN MINnD Claude Rospars (Fr) - IREX	Tarmo Savolainen (Fin) - Finnish Transport Infrastructure Agency
VINCI Autoroutes and an openBIM approach to improve construction and maintenance Mr. Sylvain Guilloteau (Fr) - PN MINnD	A view behind the BIM scenes Mr. Marc Pingoud (Ch) - Rosenthaler + Partner AG
MINnD Project, workgroup GT5 – Retro- Engineering for design and Operating & Maintenance Mr. Denis Leroux (Fr) - Setec	Development of an integrated openbim-iot-dl based approach for the shm of infrastructures: case of the grand paris express tunnel Mr. Nour-Eddine El Haddadi (Fr) - CEMENTYS
Digital twin for existing infrastructure Mr. Guillaume Hervoches (Fr) - setec tpi	BIM in New mainlines in Sweden, case The Eastlinkproject Dr. Jitka Hotovcova (Sw) - The Swedish Transport Administration
Unlocking the full potential of geospatial, asset and sensor data for BIM workflows Mr. Sebastian Brunner (Germany) - Deutschebahn	Full BIM design of the new «M3» Toulouse metro line - Focus on South aerial sector Mr. Christophe Phanouvong (Fr) - Arcadis

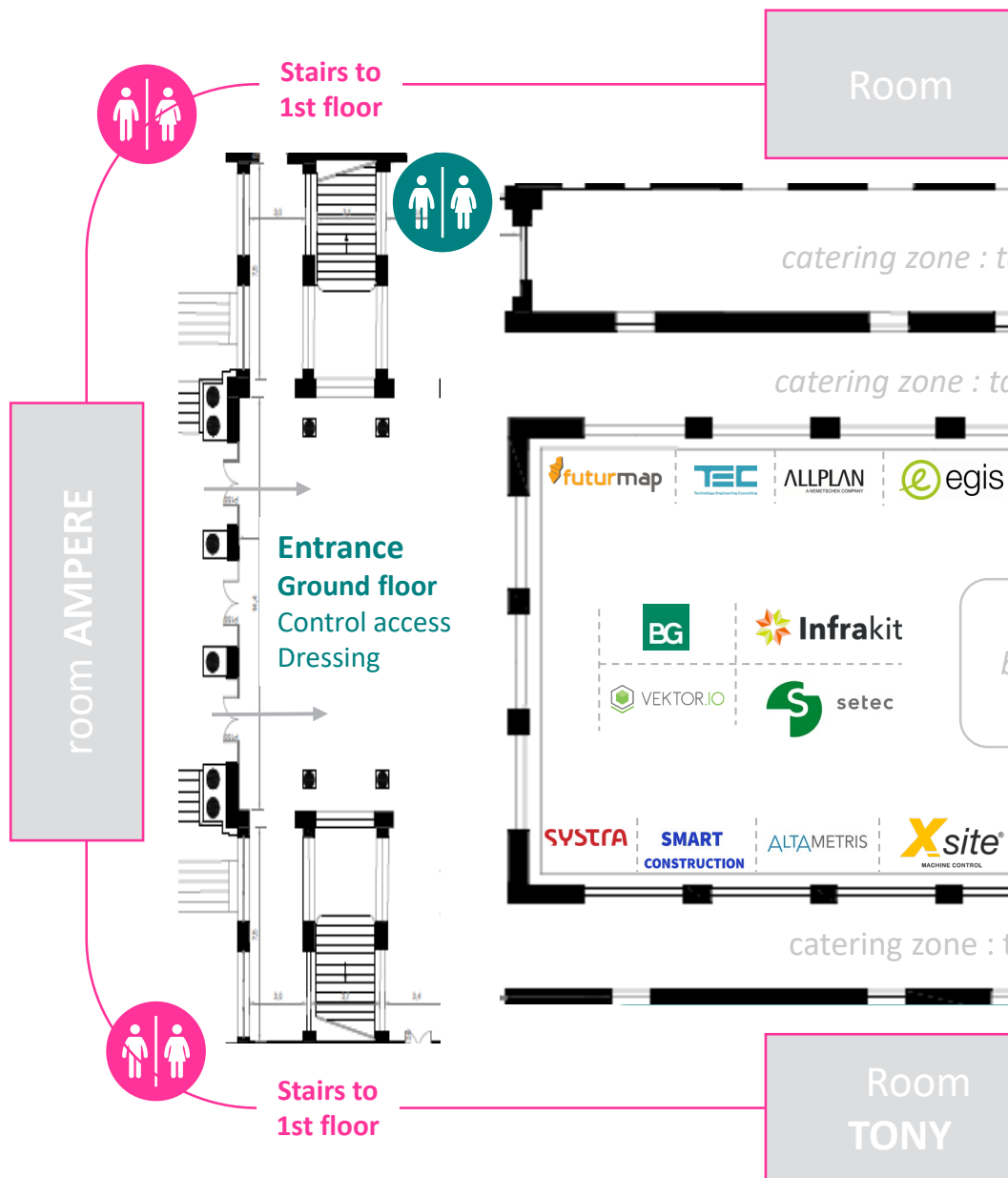


16:15 - SALLE LUMIÈRE: S7 DATA & SEMANTIC	16:00 - SALLE JACQUART: S8 TUNNEL
<p>Ms. Xenia Fiorentini (Italy) - Engisis Frédéric Grand (Fr) - buildingSMART France</p>	<p>Mr. Michel Rives (Fr) - Vianova France Pierre BENNING (Fr) - PN MINnD</p>
<p>From the development of buildingSMART Data Dictionaries for IFC Roads to the experimentation Mr. Bastien Avril (Fr) - Géodesial Group</p>	<p>Platinum presentation by Infrakit How are digitalization and sustainability connected in construction industry ? Mr. Teemu Kivimäki (Fi) - Infrakit</p>
<p>Railway Classification system (SCF) Mr. Jorge Torrico (Sp) - Ineco</p>	<p>Integrated BIM approach for New Zealand's largest Railway Project Mr. Brice Gaudin (New Zealand) - Link Alliance</p>
<p>A database for the French precast concrete industry's BIM objects library Mr. Lannoy Rémi (Fr) - CERIB</p>	<p>Maturity of knowledge-based management in infrastructure lifecycle Mr. Jussi Myllärniemi (Fi) - Tampere University</p>
<p>The project MINnD heuristic Mr. Christophe Castaing (Fr) - MINnD</p>	<p>Tool for the visualization of monitoring data in underground works Mr. Nunzio Flavio Leo (It) - GEODATA ENGINEERING SpA</p>

18:00 DRINKS RECEPTION, Exhibition and Networking



MAP



Our 22 exhibitors are located on the ground floor. Meet them:

- In the showroom during all the event
- In the *Agent de change* room on Tuesday 11 afternoon

LUMIERE

1st floor

ables to be seated

ables to be seated

buffet

ables to be seated

GARNIER

room JACQUART

Room
Agents
de
change

Ground
floor

Wednesday, 12 January

9:00 - SALLE AMPÈRE: S9 ROAD STREETS	9:15 - SALLE TONY GARNIER: S10 RAILWAYS & URBAN TRAM
<p>Mrs. Tiina Perttula (Fi) - Ramboll Dr. Charles-Edouard Tolmer (Fr) - PN MINnD</p>	<p>Ms. Mercedes Santos (Ch) - SBB Tarmo Savolainen (Fi) - Finnish Transport Infrastructure Agency</p>
<p>Platinum presentation by Setec Feedback on the BIM deployment strategy for highway infrastructure Mr. Denis Leroux (Fr) - Setec</p>	<p>openBIM as a core value implemented in SNCF Réseau BIM Strategy Prof. Pierre-Etienne Gautier (Fr) - SNCF RÉSEAU</p>
<p>Hampton Road Bridge Tunnel Project : Overcoming interoperability Mr. Philippe Testard (United States) - Hampton Road Connector Partners</p>	<p>Metro of Porto Case – ‘Mind the gap’ on a Portuguese Open BIM scenario Mr. Jose Lino (Portugal) - University of Minho</p>
<p>Reducing risks with virtual design and construction (VDC) for the longest span truss railway bridge in Lithuania Mr. Justas Petkevičius(Lithuania) - INHUS Engineering</p>	<p>The road to AIM by SYSTRA Mr. Louis-Marie Borione (Fr) - SYSTRA Mr. Lucas Gibaud (Fr) - SYSTRA</p>
<p>Development of Road Infrastructure Digital Tools within Nordic Construction Education Curriculum Prof. Rauno Heikkilä (Fi) - University of Oul</p>	<p>Leverage BIM to Improve Low Carbon Railway Infrastructure Design Ms. Christelle Chichignoud (Fr) - SYSTRA</p>
9:00 - SALLE AGENT DE CHANGE S13 BIM & GIS, GENERAL PRACTICES	
<p>Visualizing subsurface objects integrating confidence levels for geospatial positioning and geometry Prof. Bernd Domer (Ch) - HES-SO, HEPIA, University of Applied Sciences and Arts Western Switzerland, Geneva</p>	<p>Infrastructure operation support tool for climate risks: towards a convergence between GIS and BIM Dr. Michaël Gonzva (Fr) - VINCI Construction</p>

8:30 Welcome Coffee

9:15 SALLE LUMIÈRE: S11 BIM DEPLOYEMENT & DIGITAL STRATEGY	9:00 - SALLE JACQUART: S12 GEOTECHNICS EXISTING CONDITIONS
<i>Mr. Christophe Castaing (Fr) - PN MINnD</i>	<i>Mr. Clément Galandrin (Fr) - CAN</i>
Presentation of BIM Infra national deployment by country : Sweden, Denmark, Estonia, Finland, DigiPLACE and Gaia	Geotechnical Data Standardization for OpenBIM: The MINnD GT1-5 initiative <i>Dr. Mickael Beaufils (Fr) - BRGM</i>
	Being certain on the geotechnical uncertainties using the GeoBIM concept <i>Dr. Mats Svensson (Ch) - Tyréns AB</i>
	Geotechnics and subsurface Information: ontologies and data model of the ResqML v2.2 with examples of interoperable transfers between geomodelling, BIM and GIS softwares <i>Dr. Jean-Marie Leonard (Fr) - EGIS</i>
	Reduction of uncertainties in the 3D geological/geotechnical models by considering geophysical investigation results <i>Mrs. Rie Kudoh (Japan) - OYO corporation</i>
<i>Mrs. Marion Schenkwein (Fi) - Finnish structure Agency FTIA</i> <i>Mr. Vincent Keller (Fr) - PN MINnD</i>	
Computational specification of IFC Infra models <i>Ms. Xenia Fiorentini (It) - Engisis</i>	Integrating BIM and GIS technology from design to railway asset maintenance perspective <i>Dr. Judicaël Dehotin (Fr) - SNCF RÉSEAU</i>

11:00 Coffee, Exhibition and Networking

11:30 - SALLE AMPÈRE: S14 MAINTENANCE	11:45 - SALLE TONY GARNIER: S15 EXISTING CONDITIONS
<p><i>Ms. Xenia Fiorentini (It) - Engisis</i> <i>Mr. Sylvain Guilloteau (Fr) - PN MINnD</i></p>	<p><i>Mr. Petteri Palviainen (Fin) - Novatron Oy</i></p>
<p>Materials role in pavement design and its impacts in low-carbon strategies - Materials digitization for environmental impacts reduction <i>Mr. Baptiste Weiss (Fr) - Arkance Systems</i></p>	<p>Platinum presentation by Arkance Digitalization and datamodel based approach throughout the different phases of an infrastructure project <i>Ms. Lieve Dedecker (Fr) - Arkance</i></p>
<p>Inspired by REM - automated road design pilot project in Finland <i>Mr. Juha Liukas (Fi) - Sitowise Oy</i></p>	<p>Which collaborative platforms to support openBIM? <i>Mr. François Robida (Fr) - BRGM</i></p>
<p>From PIM to AIM - models in maintenance <i>Dr. Peter Axelsson (Sw) - The Swedish Transport Administration</i></p>	<p>Use of openBIM platform in entire life cycle of infra project in mining industry in Finland <i>Mr. Manu Marttinen (Fi) - Infrakit</i></p>
11:30 - SALLE AGENT DE CHANGE S 18 BRIDGE	
	<p>Development of a parametric model generation method for temporary structures in the civil engineering work execution plan preparation <i>Dr. FUMIYA MATSUSHITA (Jp) - University of Tokyo</i></p>

11:45 - SALLE LUMIÈRE: S16 BIM DEPLOYMENT	11:30 - SALLE JACQUART: S17 IFC RESEARCH PROGRAMS
<p><i>Mrs. Karin Anderson (Sw) - The Swedish Transport Administration</i> <i>Dominique Chevillard (Fr) - FNTF</i></p>	<p><i>Mr. Sylvain Marie (Fr) - PN MINnD</i> <i>Frédéric Grand (Fr) - buildingSMART France</i></p>
<p>BIM Implementation Plan for digital processes application <i>Ms. Greta Lucibello (It) - GEODATA ENGINEERING SpA</i></p>	<p>IFC Rail in a Nutshell: Schema, Standard and Implementation - Applitec GmbH - SWZ</p>
<p>BIM basis Infra - Not a new standard but an answer to the question: how are we going to exchange digital information in infrastructure in a structured and unambiguous way <i>Mr. Paulus Eckhardt (Netherlands) - Volker Wessels</i></p>	<p>IFC Airport extending the use of openBIM in airports <i>Mr. Miika Kostamo (Fi) - buildingSMART International Airport Room</i> buildingSMART</p>
<p>Client driven BIM collaboration and development across borders <i>Mr. Rasmus Fuglsang (Dk) - Nordic Road and Rail BIM Collaboration</i></p>	<p>buildingSMART International standard for underground infrastructures projects <i>Mr. Michel Rives (bSI)</i></p>
<p><i>Pierre Benning (Fr) - PN MiNnD</i> <i>Mr. Michel Rives (Fr) - Vianova France</i></p>	
<p>BIM-based Holistic Bridge Assessment <i>Mr. Matthias Müller (De) - Karlsruher Institut für Technologie</i></p>	<p>Massive openBIM bridge modeling based on information from inspections <i>Mrs. Rachele Angela Bernardello , University of Padova (Ita)</i></p>

13:00 Lunch, Exhibition and Networking

14:15 CLOSING PLENARY under the chair of
S.Soubra, pdt of EU BIM Task group (EUBTG)
Venue : Ampère
Broadcasted in English : Lumière / French : Tony Garnier

- **Survey reports** from TC442, EUBTG, buildingSMART international
- **Keynote:** Ilektra Papadaki (Architect Engineer, Policy Officer for digital construction and built environment at the European Commission - DG GROW)
- **Round table:** feedbacks from national BIM deployment in Sweden, Denmark, Estonia, Finland, Italy and France; and from European projects as digiPLACE and Gaia-X



Souheil Soubra
(Chairman), CSTB



Ilektra Papadaki,
European
Commission - DG
GROW



Christophe Castaing,
openBIM expert
(MINnD, bSI)



Jaan Saar,
Estonian Ministry
of Economic
Affairs &
Communications

VOD availables in Brella and after the event you will find also all the 70 conferences and the 2 sessions plenaries:

- Methodologies for Design Automation in Transport Infrastructure Projects - Bryden Wood Technology Ltd - UK
- Track turnout renewal by using IFC Rail Standard Structure - SBB AG (Swiss federal railways) - SWZ
- usBIM.infra: a specific CDE service for Open BIM infrastructures - Acca Software - ITA
- BIM for Water Industry, SUEZ Consulting global vision from drinkable water to waste water treatment - SUEZ - FR

ALTA METRIS

CONSTRUIRE ET VALORISER
VOTRE PATRIMOINE DIGITAL
GRÂCE AU RETRO-BIM



LA FORCE DE LA
COMBINAISON DES
DONNÉES HÉTÉROGÈNES

VEKTOR.IO



GIS - BIM - INFRA
ALL IN YOUR BROWSER

One Model. One Source of Truth.

Real Time Collaboration Made Easy

construction.trimble.fr



ALLPLAN
AN EMETSCHEX COMPANY



ALLPLAN AEC 2022 - BUILDABILITY AT ITS BEST

PLATINUM SPONSORS



GOLD SPONSORS



SILVER SPONSORS



EXHIBITOR



PRESS PARTNERS



Contact

Guersendre NAGY - buildingSMART France
guersendre.nagy@bsfrance.org / +33 6 87 46 91 48

